

TIGER WORLDWIDE NETWORK



Facade & Architectural Design Series 68 Flat Matte



Super Durable Powder Coating QUALICOAT Class II
Actual Powder Coated Samples

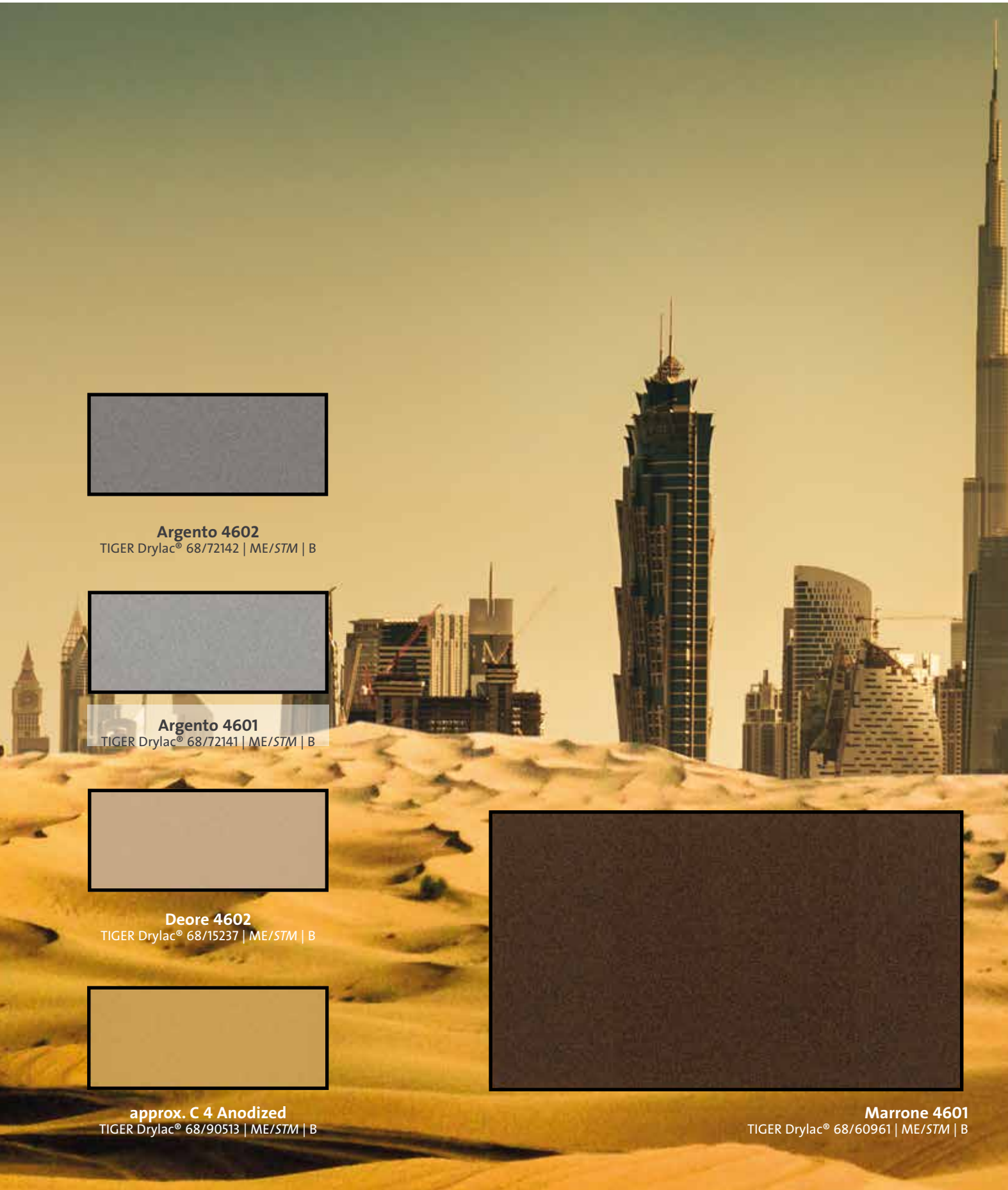


www.tiger-coatings.com
www.tiger.archi

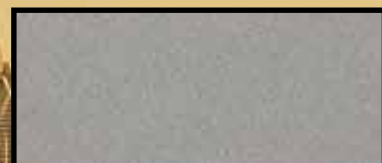


99810508710/2019

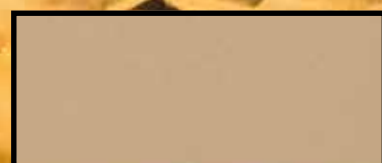
Flat Matte 68



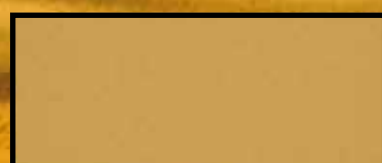
Argento 4602
TIGER Drylac® 68/72142 | ME/STM | B



Argento 4601
TIGER Drylac® 68/72141 | ME/STM | B



Deore 4602
TIGER Drylac® 68/15237 | ME/STM | B



approx. C 4 Anodized
TIGER Drylac® 68/90513 | ME/STM | B



Marrone 4601
TIGER Drylac® 68/60961 | ME/STM | B

ME/STM = metallic/flat matte | GL/STM = smooth/flat matte



Scan me!
Color Selector | Webshop



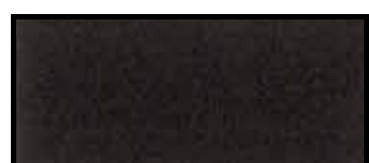
Champagne 4601
TIGER Drylac® 68/15236 | ME/STM | B



Terra 4601
TIGER Drylac® 68/90514 | ME/STM | B



Deore 4601
TIGER Drylac® 68/60962 | ME/STM | B



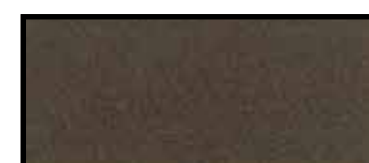
Rosso 4601
TIGER Drylac® 68/80476 | ME/STM | B



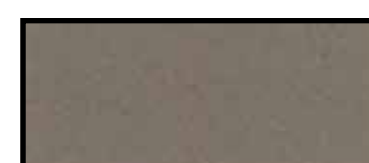
approx. C 33 Anodized
TIGER Drylac® 68/60959 | ME/STM | B



approx. C 32 Anodized
TIGER Drylac® 68/15235 | ME/STM | B



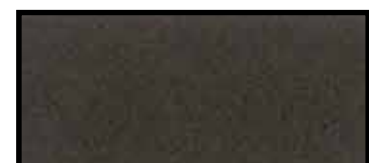
approx. C 34 Anodized
TIGER Drylac® 68/60960 | ME/STM | B



Terra 4602
TIGER Drylac® 68/72144 | ME/STM | B



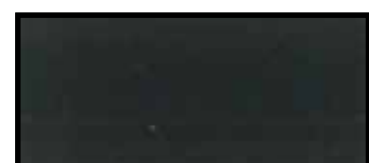
approx. C 31 Anodized
TIGER Drylac® 68/90512 | ME/STM | B



Deore 4603
TIGER Drylac® 68/60964 | ME/STM | B



Mica 4601
TIGER Drylac® 68/60963 | ME/STM | B



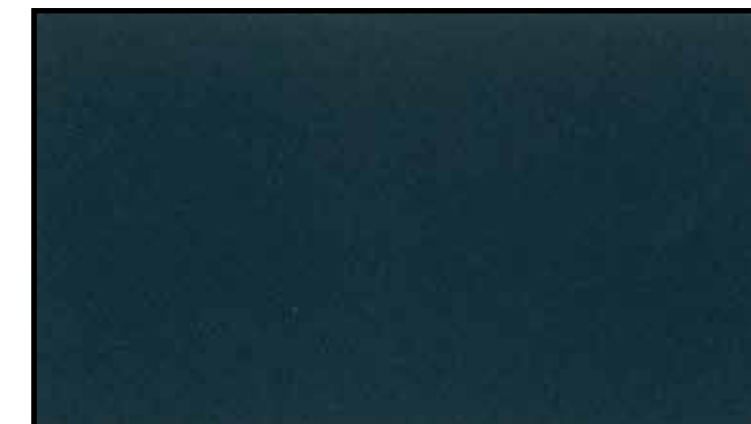
Grey Classic 4602
TIGER Drylac® 68/72147 | GL/STM



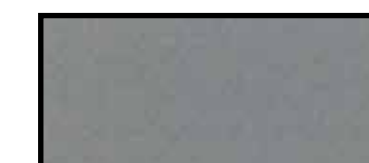
Azzurro 4601
TIGER Drylac® 68/40389 | ME/STM | B



Dark Blue-Grey Anodized B 717
TIGER Drylac® 68/72143 | ME/STM | B



Azzurro 4602
TIGER Drylac® 68/40387 | ME/STM | B



Pale Blue Grey Anodized B711
TIGER Drylac® 68/72140 | ME/STM | B



approx. C 0 Anodized
TIGER Drylac® 68/90510 | ME/STM | B



approx. C 35 Anodized
TIGER Drylac® 68/80479 | GL/STM



Bianco 4601
TIGER Drylac® 68/10591 | GL/STM



All items available from stock. ONLINE VERSION: The colors/effects shown here will deviate from the original color/effect due to screen technology. Prior to processing the appropriate Product Data Sheets and Technical Information Sheets must be consulted. Metallic effects: please observe the instructions for Application Categories A - D acc. to the Technical Information Sheet No. 44.



Flat matte aesthetics for all latitudes

It is the first impression of a building and visible expression of innovative architecture: the facade. Tasteful, functional and in a variety of eloquent shapes, the building's envelope represents a face that is unmistakable.

Climate change, increasing UV exposure and the stringent quality requirements for coating materials according to QUALICOAT are turning facade coatings into a vital discipline worldwide.

TIGER Drylac® Series 68 Flat Matte ensures architects, designers and builders compliance with this quality standard. The product's design is highly weather-resistant, free of special labeling and it impresses with a velvety touch: for unique buildings around the globe.